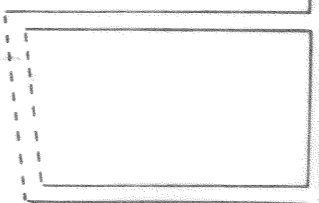
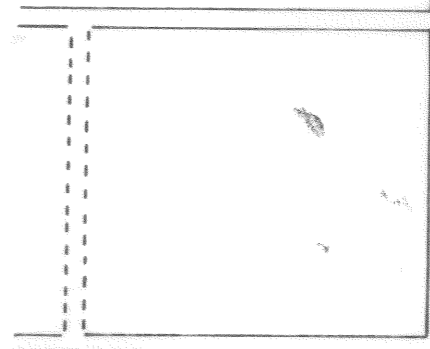




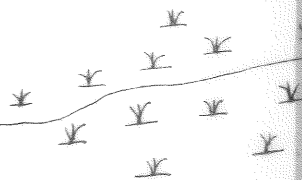
PEDRA D'AGUA

RIO SÃO MATEUS

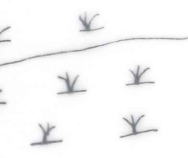
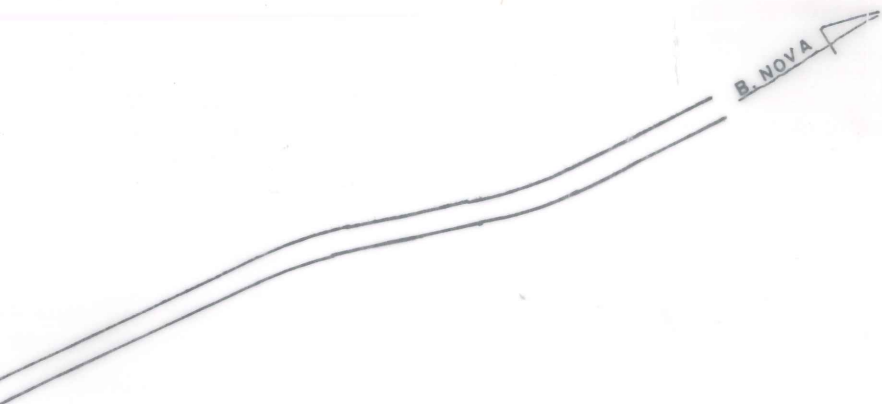
GURIRI




CORREGO



MU
DIR
EL
ATU



 IBGE X RECENSEAMENTO GERAL DO BRASIL	
MUNICÍPIO: SÃO MATEUS	
E. S.	
DISTRITO: SÃO MATEUS	LOCALIDADE: PEDRA D'ÁGUA
ELABORAÇÃO: F. SESP	DATA: 05.02.90
ATUALIZAÇÃO: GEDEON, ABILIO	ESCALA: 1: 2000
DESENHO: GEDEON A. OLIVEIRA	PRANCHA: 01/01

00001 - CVA - 20